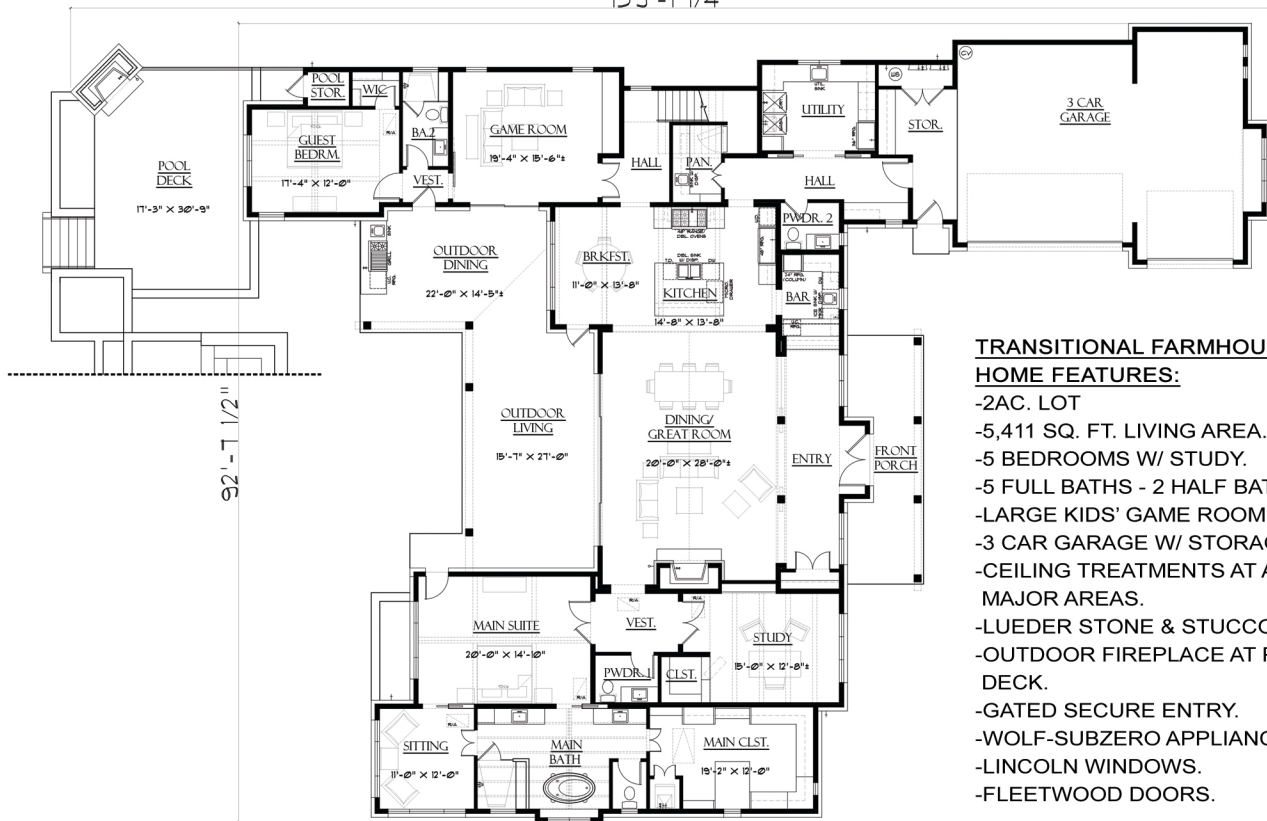


505 CRYSTAL CREEK DRIVE



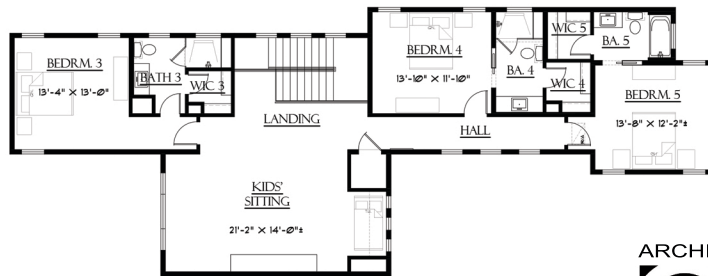
139'-1 1/4"



LOWER FLOOR PLAN

TRANSITIONAL FARMHOUSE HOME FEATURES:

- 2AC. LOT
- 5,411 SQ. FT. LIVING AREA.
- 5 BEDROOMS W/ STUDY.
- 5 FULL BATHS - 2 HALF BATHS.
- LARGE KIDS' GAME ROOM.
- 3 CAR GARAGE W/ STORAGE.
- CEILING TREATMENTS AT ALL MAJOR AREAS.
- LUEDER STONE & STUCCO EXTERIOR.
- OUTDOOR FIREPLACE AT POOL DECK.
- GATED SECURE ENTRY.
- WOLF-SUBZERO APPLIANCES.
- LINCOLN WINDOWS.
- FLEETWOOD DOORS.



UPPER FLOOR PLAN



Gery Wilde

P. (512) 327-1801

gwilde@wildehomes.com

ARCHITECTURE BY:



www.geschkegroup.com